

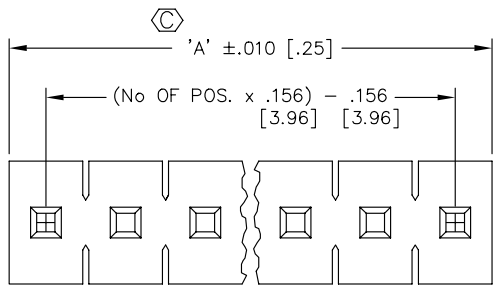
REVISION U

UNLESS OTHERWISE NOTED
 DIMENSIONS ARE IN INCHES TOLERANCES ARE:
 ONE PLACE DECIMALS ± .1 [2.5] THREE PLACE DECIMALS ± .005 [.13]
 TWO PLACE DECIMALS ± .01 [.25] FOUR PLACE DECIMALS ± .0020 [.051]
 ANGLES ± 1°

TITLE: .045 SQ POST ASM

DWG NO: FWJ-XX-XX-TX-S-XX
 SHEET 1 OF 1

DO NOT SCALE FROM THIS PRINT



FWJ-XX-XX-TX-S-XX

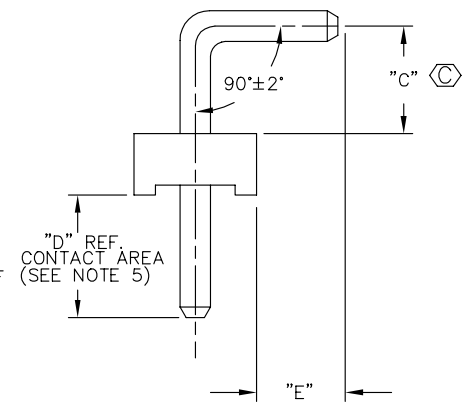
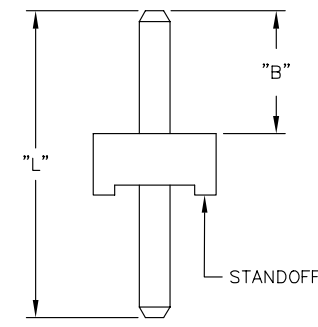
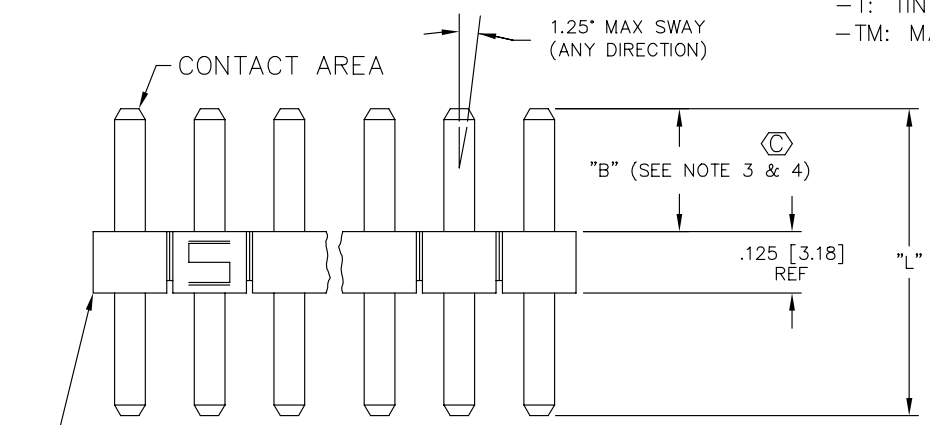
POSITION SPECIFICATION
 -01 THRU -23
 "A" = XX x .156 [3.96]
 -24 = SEE FSW-24-156

LEAD STYLE SPECIFICATION
 SEE TABLE 1

PLATING SPECIFICATION
 -T: TIN
 -TM: MATTE TIN

OPTION
 -RA = RIGHT ANGLE

BODY SPECIFICATION
 USE FSW-24-156



- NOTES:
- 1.) MIN PUSHOUT FORCE: 3 lbs.
 - 2.) MAX ALLOWABLE BOW AFTER ASSEMBLY: .003 [.08] INCH/INCH
 - 3.) HEIGHT VARIATION BETWEEN PINS SHALL BE .005 [.13] MAX.
 - 4.) BANDOLIER AREA TO BE POSITIONED ABOUT OR TOWARDS STANDOFF SIDE OF BODY. ENTIRE BANDOLIER AREA MUST NOT BE LOCATED IN CONTACT AREA
 - 5.) BANDOLIERS CANNOT BE ENTIRELY LOCATED IN CONTACT AREA.

-RA
 IN PROCESS VIEW

RIGHT ANGLE
 -02 & -04 ONLY

TABLE 1

STYLE	TERMINAL	"B" POST	"L" OAL	-RA ONLY		
				"C"	"D"	"E"
-01	T-1S8-01-TX	.450 [11.43]	.750 [19.05]	N/R	N/R	
-02	T-1S8-02-TX	.500 [12.70]	.800 [20.32]	.100 [2.54]	.175 [4.45]	.320 [8.13] REF
-03	T-1S8-03-TX	.674 [17.12]	.955 [24.25]	**195 [3.81]	**156 [3.96]	**320 [8.13] REF
-04	T-1S8-04-TX	.809 [20.55]	1.090 [27.69]	.195 [3.81]	.156 [3.96]	.534 [13.56] REF
-05	T-1S8-11-TX	.150 [3.81]	.750 [19.05]	N/R	N/R	N/R

** NOT RELEASED FOR PRODUCTION

PROPRIETARY NOTE
 THIS DOCUMENT CONTAINS INFORMATION CONFIDENTIAL AND PROPRIETARY TO SAMTEC INC. AND SHALL NOT BE REPRODUCED OR TRANSFERRED TO OTHER DOCUMENTS OR DISCLOSED TO OTHERS OR USED FOR ANY PURPOSE OTHER THAN THAT FOR WHICH IT WAS OBTAINED WITHOUT THE EXPRESSED WRITTEN CONSENT OF SAMTEC INC.

EXISPROD\ASSEMBLY\MISC FWJ-ASM

samtec

520 PARK EAST BLVD. NEW ALBANY, INDIANA 47150
 PHONE (812) 944-6733 P.O. BOX 1147
 CODE 55322

MADE BY: DEAN PURVIS 2-19-86

FWJ-XX-XX-TX-S-XX
 SHEET 1 OF 1